

Arbeits. Platten.



GLAS SATIN STUFENOPTIK
(mit 2 mm Dickkante)



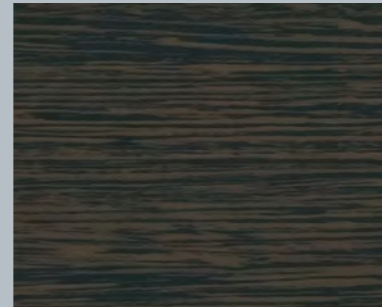
BRAZIL (4 cm stark)



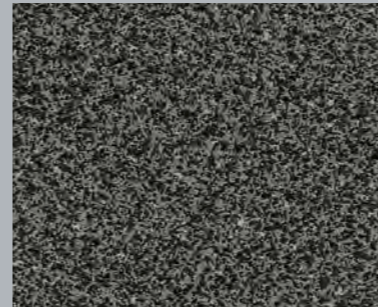
SPECKSTEIN GRAU (4 cm stark)



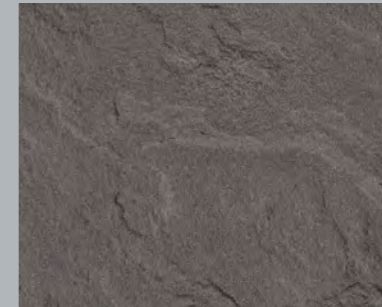
EDELAHORN (4 cm stark)



WENGE (4 cm stark)



ANTHRAZIT (4 cm stark)



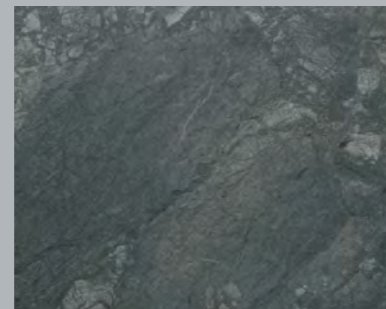
SCHIEFER (4 cm stark)



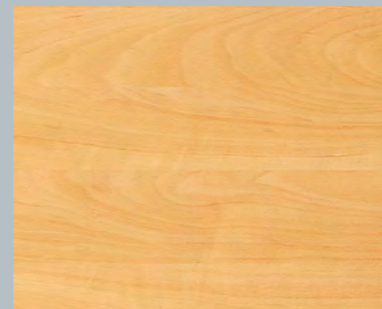
TURMALIN (4 cm stark)



MODENA GRAU/BRAUN (4 cm stark)



GRANIT SCHWARZ (4 cm stark)



APFEL CALVADOS (4 cm stark)



FRANZÖSISCHER WALNUSS (4 cm stark)



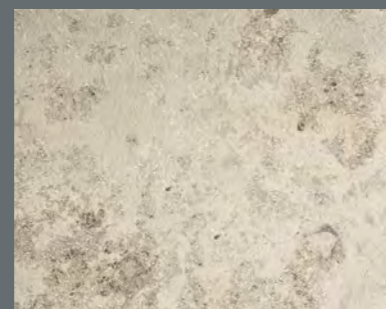
CORINT HELLGRAU (4 cm stark)



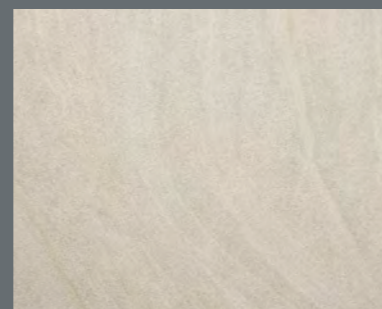
KUPFER OPTIK (4 cm stark)



NUSSBAUM (4 cm stark)



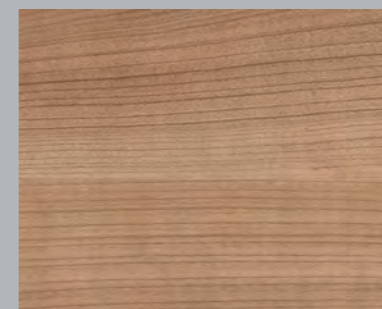
JURA BEIGE GRAU (4 cm stark)



SANDSTEIN BEIGE(4 cm stark)



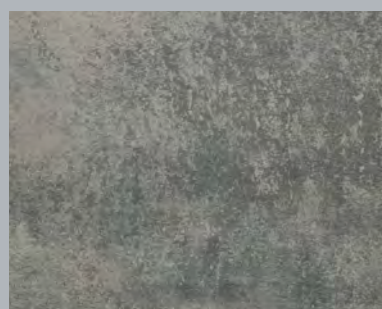
BUCHE NATUR (4 und 5 cm stark)



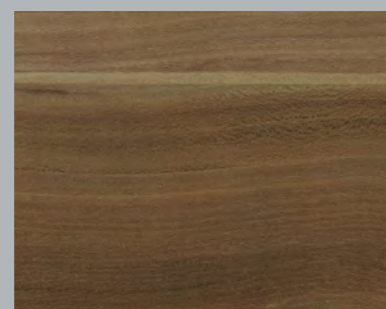
NOCE (4 und 5 cm stark)



CANADISCHER APFEL (4 und 5 cm stark)



METALL OPTIK (4 cm stark)



ZWETSCHGE (4 cm stark)



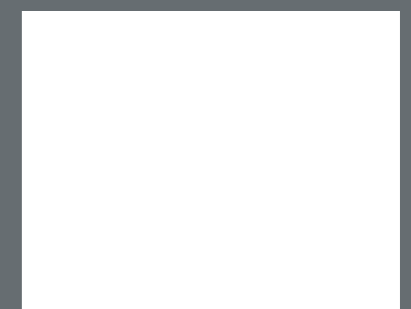
SANDSTEIN BRAUN (4 cm stark)



MACASSAR (5 cm stark)



GRAPHIT (5 cm stark)



WEISS (4 und 5 cm stark)